



**PADNOS**



Paper, plastics, metals and more.

# History



➤ Louis Padnos settled in Holland in 1905

➤ Second Generation

- Seymour Padnos

- Stuart Padnos

➤ Third Generation

- Jeff Padnos

- Shelley Padnos

- Mitch Padnos

- Doug Padnos

➤ Fourth Generation

- Jonathan Padnos

- Josh Padnos

- Sam Padnos

1905



*Recycling for over a Century.*



# Values Statement

We value families.

We value relationships.

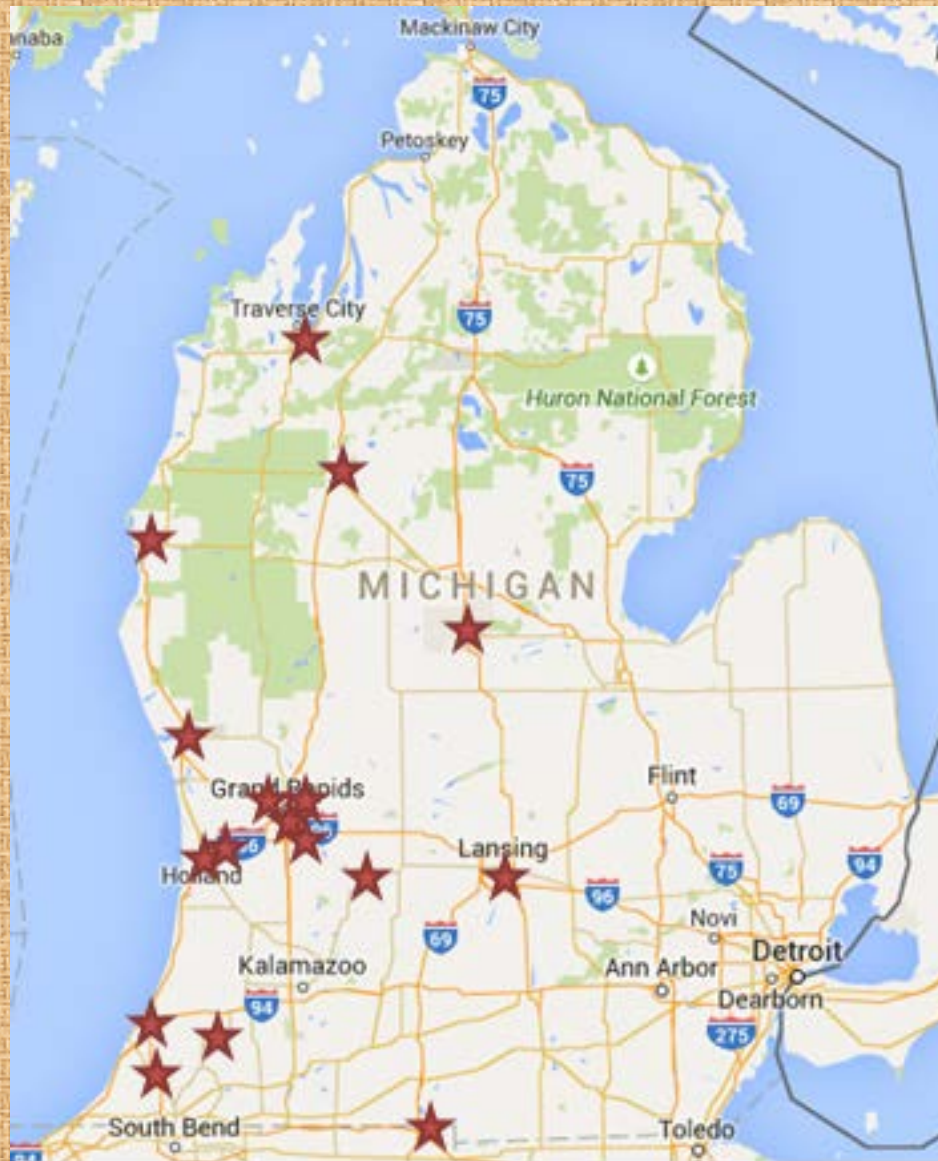
We value safety, quality and the environment.

We value individuals and collaboration.

We value excellence.

We value our local communities.

There is a PADNOS location near you!





*Shredding*



# *Shearing*





# *Baling*



# *Hot Briquetting*







*Whatever  
is required.*





# *Nonferrous Metals*



# Processing in Alma Includes:

- Receiving
- Sorting
- Torching
- Baling



Items needed to be shredded/sheared are sent off to the larger processing facilities in Holland & Grand Rapids.



## *Pick-Up Service Equipment Offered*



# Padnos Equipment

## Lugger (6-22 yrd)



### Max Weights for Boxes:

6-8 yard lugger box	22,000
12-14 yard lugger box	21,000
16-19 yard lugger box	20,000
20-22 yard lugger box	20,000

### Container Dimensions:

	<u>L</u>	<u>W</u>	<u>H</u>
12 yard	8' 0"	5' 4"	4' 7"
14 yard	12' 4"	5' 4"	6' 0"
22 yard	15' 8"	5' 4"	7' 9"

# Padnos Equipment

## Roll Off (18-100 yd)



### Max Weights for Boxes:

18-20 yard roll off box	33,000
25-35 yard roll off box	32,000
40-45 yard roll off box	30,000
50 yard roll off box	50,000
60 yard roll off box	49,000
70 yard roll off box	48,000
85-100 yard roll off box	65,000

### Container Dimensions:

	<u>L(in)</u>	<u>W(in)</u>	<u>H(in)</u>
30 yard	20'0"	7'4"	5'7.5"
40 yard	22'0"	7'4"	6'10"
40 yard L	22'7"	7'0"	5'5"
45 yard	27'0"	7'4"	7'8"
50 yard	27'0"	7'4"	7'0"
60 yard	35'0"	7'2"	5'4"
70 yard	35'0"	7'2"	7'0"
75 yard	39'0"	7'0"	7'4"
85 yard	44'0"	7'0"	7'4"
95 yard	44'5"	7'0"	7'4"

# Padnos Equipment

## Van Trailer



## Gon Trailer



### Container Dimensions:

	<u>L(in)</u>	<u>W(in)</u>	<u>H(in)</u>
Van Trailer: 48'	48'0"	8'6"	13'6"
53'	53'0"	8'6"	13'6"

### Container Dimensions:

	<u>L(in)</u>	<u>W(in)</u>	<u>H(in)</u>
Gon Trailer: HS	45'0"	7'4"	9'0"
LS	45'0"	7'4"	4'5"

### Max Weight:

Van Trailer: 40,000

### Max Weight:

Gon Trailer: 40,000\*

\*varies on axle configuration

# Padnos Equipment

## Shop Tub



## Gaylord



### Container Dimensions:

	<u>L(in)</u>	<u>W(in)</u>	<u>H(in)</u>
Standard Shop Tub:	52"	40"	30"

### Max Weight:

Standard Shop Tub: 5,000 lbs

### Container Dimensions:

	<u>L(in)</u>	<u>W(in)</u>	<u>H(in)</u>
Standard Gaylord:	48"	40"	41"

### Max Weight:

Standard Shop Tub: 4,000 lbs



# Padnos Equipment

## Roura or Dump Hopper



### Roura or Dump Hopper Dimensions:

<u>Size</u>	<u>Length</u>	<u>Width</u>	<u>Height</u>
¼ yd	46 ½"	33 ½"	24"
½ yd	54"	33 ½"	31 ½"
¾ yd	60 ¼"	39 ½"	35"
1 yd	64 ¾"	39 ½"	37 ¾"
1 ½ yd	75 ¾"	39 ½"	46 ½"
2 yd	75 ¾"	51 ½"	46 ½"
2 ½ yd	75 ¾"	63 ½"	47 ½"
3	75 ¾"	75 ½"	47 ½"
3 ½ yd	75 ¾"	87 ½"	47 ½"
4 yd	75 ¾"	99 ½"	47 ½"
5 yd	75 ¾"	123 ½"	47 ¼"

## Barrel



### Castors:

Steel or Phenolic:

4", raises hopper approx 5 ¼"

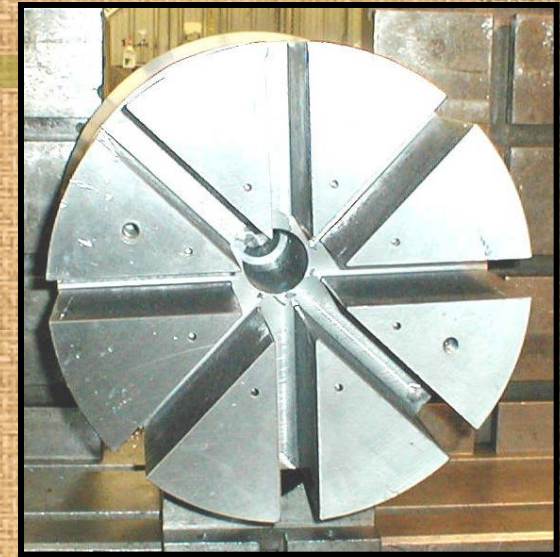
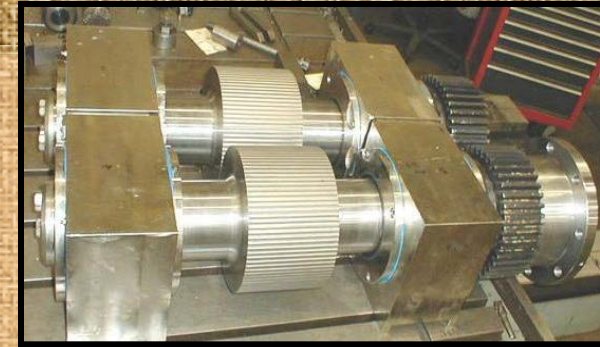
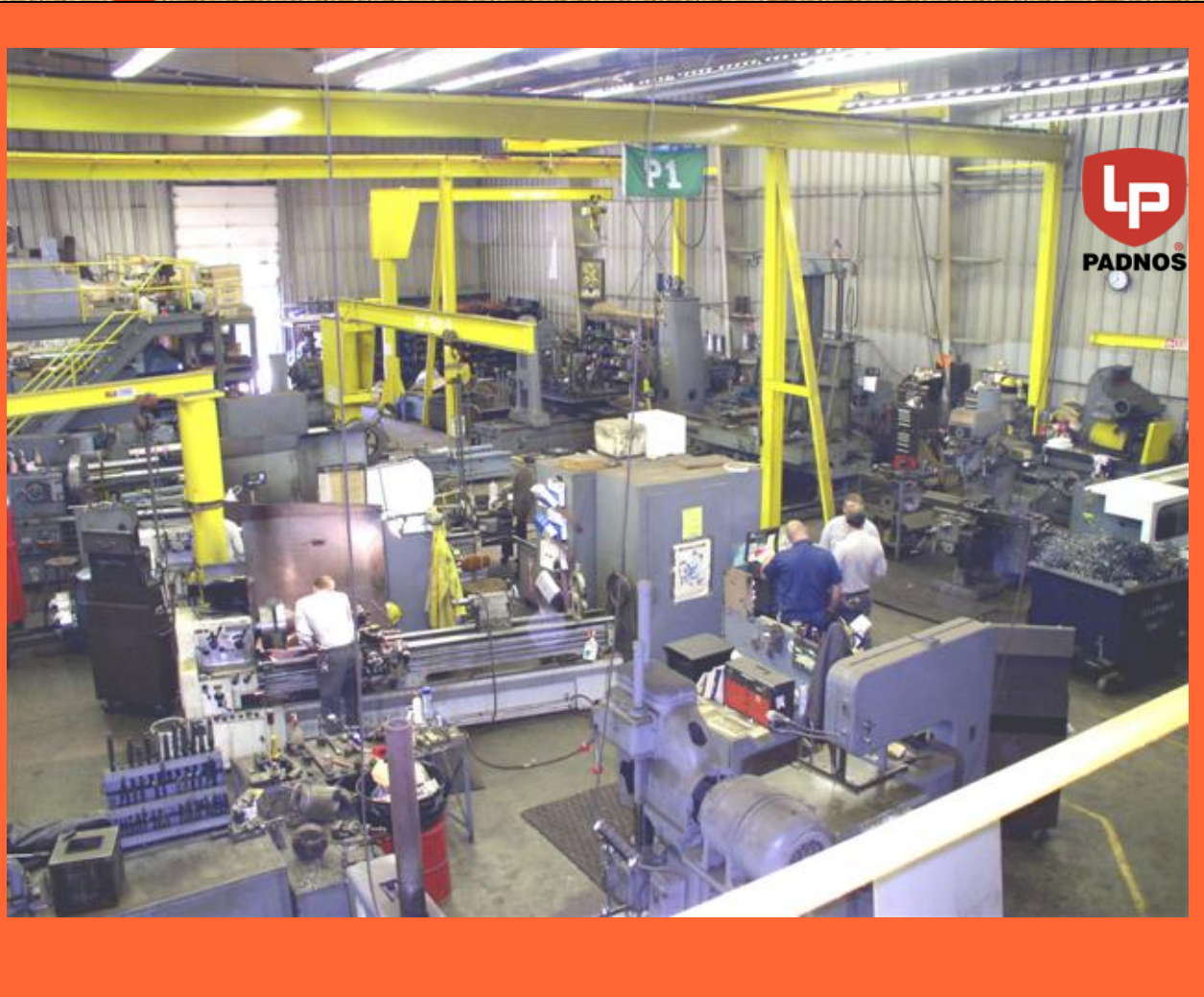
6", raises hopper approx 7 ¼"

# Padnos Equipment

## Lugger Lids



# IXL Machine Shop



# Scrap Audits

- **Perform site visit**
- **Audit recycling streams**
- **Evaluate landfill avoidance opportunities**
- **Calculate decreased costs and increased revenues**
- **Obtain “buy-in” from all employees**
- **Implement recycling programs**



*Unloading:* We offer heavy equipment such as cranes, forklifts, and loaders to assist in loading/unloading material.

*Material Testing:* Padnos has cutting edge analytical tools to test the chemical composition of your material.



# Where Does Our Scrap Come From?

- 50%

- Peddlers
- Local Businesses



We will work with you on how to separate your materials!

- 50%

- Industrial by-products
- Engineer Offfall





Industrial By-Product &  
Engineer Offfall

# Export





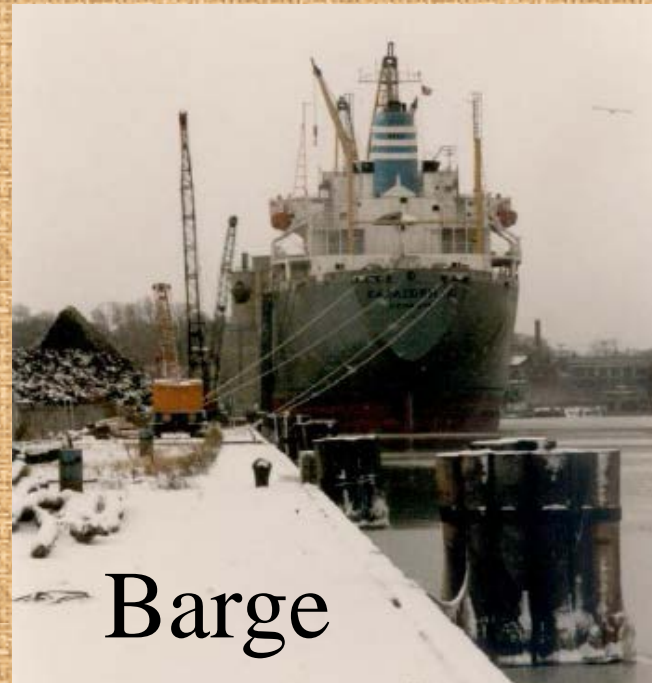
# Shipping Scrap



Truck



Rail



Barge

# Customers & what type of scrap they utilize.

- Steel Mills: 5' prepared grades of heavy melting steel, plate & structural, busheling, bundles, and machine shop turnings.
- Cast Iron Foundries: 2' prepared grades of foundry steel, plate & structural, cast iron, busheling, and cast iron borings.
- Specialty Steel Mills: Prepared stainless steel segregated by type.
- Brass Mills: Clean copper scrap and clean brass scrap segregated by type.
- Brass Inget Makers: Prepared brass scrap segregated type & clean copper scrap.
- Copper Refineries: Clean copper scrap & copper bearing sludge & ash.
- Aluminum Mills: Prepared aluminum sheet/plate segregated by alloy.
- Secondary Aluminum Smelters: Prepared cast aluminum grades, prepared old sheet aluminum copper and aluminum radiators, and aluminum turnings.
- Secondary Lead Smelters: Lead acid batteries & clean lead scrap.



# Scrap Sculptures





*Paper*



*Plastics*

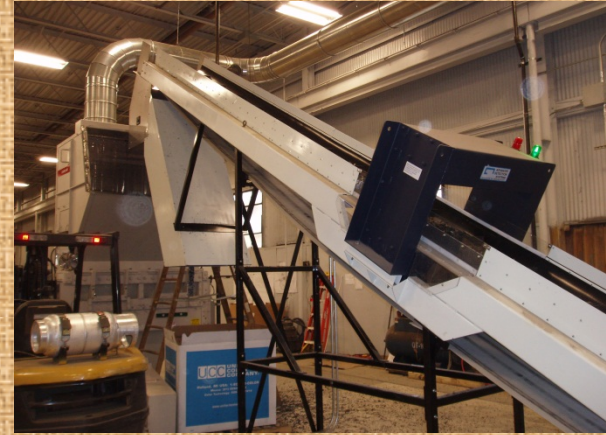
# Shredding and Grinding

the process of processing

To the Shredder



To the Granulator



Material Evacuation



Finished Product

Paper, plastics, metals and more.

